

Ultra
H.265

IQ

Super
StarLight

Push In Mic

Edge Storage

Audio I/O
Alarm I/O

Smart Tracker
Person/Face

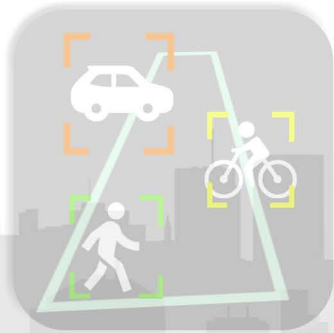
AI
Person

WDR

Corridor Mode

Warm White
LED

Active
Interference



EyeSpy[®] **Videosec[®]**

IP Video: 2022 Q3

ver.: 1.09



Več kot kamera

IQ Analytics je nova generacija VCA. Uporablja umetno inteligenco za prepoznavanje osebe ali vozila (tudi dvokolesniki so ločena kategorija) na podlagi njegove oblike.



Kamera lahko v vidnem polju hkrati spremlja do 20 predmetov. Zaznavanje obrazov je tudi osnova za štetje ljudi.

Opozorila o zaznavanju vdora in prečkanju črte temeljijo na zaznavanju oblike človeka in vozila, ki jih je mogoče naknadno poiskati glede na vrsto predmeta. Snemalniki IQ lahko prikažejo miniaturni seznam trenutnih opozoril v pogledu v živo.



Tema ni ovira

Super Starlight kamere uporabljajo leče z visoko svetilnostjo, senzorje z dvojnimi izkoristkom in posebne algoritme za zagotavljanje barv pri šibki svetlobi.

V popolni temi vgrajene bele in infrardeče LED diode pomagajo pri zajemanju slik.

S tehnologijo True WDR je vsaka podrobnost vidna tako v najtemnejšem kot najsvetlejšem delu slike, tudi v protisvetlobi ali pri močnem prehodu iz svetlobe v senco.









model	IPW-2122LA-28F	IPD-3612LA-28F	IPW-2122-28WIFI
opis	Starlight PoE FullHD IP bullet camera	Starlight PoE FullHD IP dome camera	WiFi (b/g/n) IP bullet camera
senzor	1/2.7" 2MP FullHD	1/2.7" 2MP FullHD	1/2.9" 2MP FullHD
max. število sličic	30fps / 25fps	30fps / 25fps	30fps / 25fps
leča	2.8mm f/2, 112.9° fixed lens	2.8mm f/2, 112.9° fixed lens	2.8mm f/2, 101.1° fixed lens
minimalna osvetlitev	0.01 lux @color	0.01 lux @color	0.01 lux @color
0 lux izvir svetlobe, domet svetlobe	IR, 850nm 30m max	IR, 850nm 30m max	IR, 850nm 30m max
wide dynamic range	120 dB real WDR	120 dB real WDR	dWDR
video kompresija	H.264, H.265 + Smart Encoding, MJPEG (5fps+15fps)	H.264, H.265 + Smart Encoding, MJPEG (5fps+15fps)	H.264, H.265 + Smart Encoding, MJPEG (5fps+15fps)
video tok	1. 2MP 1920x1080 2. 720p max.	1. 2MP 1920x1080 2. 720p max.	1. 2MP 1920x1080 2. 720p max
9:16 corridor način	±90°	±90°	-
OSD / privatna maska	4 / 4	4 / 4	4 / 4
avdio vhod	built-in microphone	built-in microphone	built-in microphone
avdio izhod	-	-	-
VCA, analitika posnetkov	4x intrusion detection 4x crossline detection trigger based on vehicle & human body detection	4x intrusion detection 4x crossline detection trigger based on vehicle & human body detection	1x human body detection zone
možnost shranjevanja posnetkov	microSD 128GB max	microSD 128GB max	microSD 128GB max
ANR funkcije	records on network disconnect	records on network disconnect	records on network disconnect
reset tipka	-	-	1
zaščita pred vlago	IP67	IP67	IP67
antivandalna zaščita	-	-	-
vir napajanja, max poraba (W)	PoE (IEEE 802.3af), DC 12V±25%, 7W max	PoE (IEEE 802.3af), DC 12V±25%, 7W max	DC 12V±25%, 4.0W max
prenapetostna zaščita	4kV	4kV	4kV
teža	0.5kg	0.5kg	0.25kg
mere	165 x 63 x 62 mm	165 x 63 x 62 mm	172 x 76 x 72mm
podnožje kamere, montaža na steno/drog	TR-JB05-A-IN	TR-JB03-I-IN	TR-JB05-A-IN TR-UP06-B-IN
dodatni opis	Well balanced image quality with basic IQ analytic alarms, real WDR, built-in microphone and μSD, at the best possible price	Well balanced image quality with basic IQ analytic alarms, real WDR, built-in microphone and μSD, at the best possible price	Connects to the set 802.11b/g/n WiFi network, when LAN is disconnected, SSID setup over LAN or w. QR code



IPD-3234L-28ZD	IPD-3634-28Z	IPF-868ER-F18-B	model
PoE 4MP IP motorized dome	PoE Smart IP motorized dome with microphone	Fisheye PoE IP dome with 6 streams	opis
1/3" 4MP 2592x1520 20fps	1/3" 4MP 2592x1520 20fps / 25fps	1/1.7" 12MP CMOS 15fps / 25fps	senzor
2.8mm-12mm f/1.6, 107°-28.4° motorized, autofocus	2.8mm-12mm f/1.4, 91°-27° motorized, autofocus	1.8mm f/2.4 Horizontal 180° 360° full circle view	max. število sličic
0.01 lux @color IR 850nm 30m max	0.005 lux @color IR 850nm 3v0m max	0.05 lux @color IR, 850nm 10m max	leča
dWDR H.264, H.265 + Smart Encoding, MJPEG (5fps+15fps)	120dB true WDR H.264, H.265 + Smart Encoding, MJPEG (5fps+15fps)	dWDR H.264, H.265 + Smart Encoding, MJPEG (5fps+15fps)	min. osvetlitev
1. 4M (2592x1520) 2. 720p max 3. D1/4CIF max	1. 4M (2592x1520@20fps, 2560x1440@25fps) 2. 1080p max 3. D1/4CIF max	6 streams max: 3x fisheye (4000x3000) 1x panoramic dewarp 4x digital PTZ view	0 lux vir svetlobe, domet svetlobe
- 4 / 4	±90° 8 / 4	±90° 8 / 4	wide dynamic r.
-	built-in microphone	built in mic, 35kΩ, 2Vpp speaker, 600Ω, 2Vpp	video kompresija
1x intrusion detection zone 1x human body detection zone w. updated firmware	4x cross line detection 4x intrusion detection defocus detection scene change detection face detection people counting audio detection	cross line detection intrusion detection heat map audio detection	video tok
microSD 256GB max records on network disconnect	microSD 256GB max records on network disconn.	microSD 256GB max rec. on network disconn.	9:16 corridor način
-	-	1 / 1	OSD/privat.maska
IP67 IK10	IP67 -	IP67 IK10	audio vhod
PoE (IEEE 802.3af), DC 12V±25%, 7W max 6kV	PoE (IEEE 802.3af), DC 12V±25%, 8.3W max 2kV	PoE (IEEE 802.3af), DC 12V±25%, 9.6W max 4kV	audio izhod
0.92kg Ø 148 x 111mm	0.82kg Ø 129 x 110mm	0.5kg Ø 148 x 112mm	VCA, analitika posnetkov
TR-JB04-C-IN	TR-JB03-H-IN TR-WM03-B-IN	TR-JB04-C-IN	mož. shranjevanja posnetkov
best value for money, usable as stand-alone system with local μSD recording	VCA + face detection, built-in areal microphone w. adjustable gain	max 6 streams fisheye, selectable wall/ceiling mounting opt. for dewarp	ANR funkcije
			alarm I/O
			zaščita pred vodo antivandal.ohišje
			vir napajanja, max poraba (W)
			prenapet.zaščita
			teža
			mere
			podnožje kamere, montaža na steno/drog
			dodatni opis

model	IPW-2122LS-40F	IPD-3612LS-28F	IPW-2122LSA-28WAL	IPD-3612LSA-28WAL	IPW-2124LSA-28WAL	IPW-2124LSA-28F/40F	IPD-3614LSA-28F	IPW-2324LSA-28Z	IPW-2128LSA-28F	IPD-328LSA-28F
opis	Starlight PoE FullHD IP bullet camera	Starlight PoE FullHD IP dome camera	Starlight PoE FullHD IP w. IR + white LED	Starlight PoE IP 2MP dome camera, IR+white LED	Starlight PoE IP 4MP bullet camera, IR + white LED	Starlight PoE 4MP IP bullet camera	Starlight PoE 4MP IP dome camera	Starlight PoE 4MP IP motorized bullet	Starlight PoE 8MP/4K IP bullet camera	Starlight PoE 8MP/4K IP dome camera
senzor	1/2.7" 2MP FullHD	1/2.7" 2MP FullHD	1/2.8" 2MP FullHD	1/2.8" 2MP FullHD	1/3" 4MP 2688x1520	1/3" 4MP 2688x1520	1/3" 4MP 2688x1520	1/3" 4MP 2688x1520	1/2.7" 8MP 3840x2160	1/2.7" 8MP 3840x2160
max. število sličic	30fps / 25fps	30fps / 25fps	30fps / 25fps	30fps / 25fps	25fps	30fps / 25fps	30fps / 25fps	30fps / 25fps	20fps (30fps@5MP)	20fps (30fps@5MP)
leča	4mm f/1.6, 86.5° fixed	2.8mm f/1.6, 112.7° fixed	2.8mm f/1.6, 106.7° fixed	2.8mm f/1.6, 106.7° fixed	2.8mm f/1.6, 112.9° fixed	2.8mm f/1.6, 101.1° fixed	2.8mm f/1.6, 101.1° fixed	2.8mm-12mm f/1.6, 107°-35° motorized, autofocus	2.8mm f/1.6, 112.9° fixed	2.8mm f/1.6, 112.9° fixed
min. osvetlitev	0.002 lux @color	0.002 lux @color	0.002 lux @color	0.002 lux @color	0.003 lux @color	0.003 lux @color	0.003 lux @color	0.003 lux @color	0.005 lux @color	0.005 lux @color
0 lux izvir svetlobe, domet svetlobe	IR, 850nm 50m max	IR, 850nm 30m max	IR 850nm + White LED 30m max / 30m max	IR 850nm + White LED 30m max / 30m max	IR 850nm + White LED 30m max / 30m max	IR 850nm 50m max	IR 850nm 30m max	IR 850nm 50m max	IR 850nm 50m max	IR 850nm 30m max
dynamic range	dWDR	dWDR	120dB	120dB	120dB	120dB	120dB	120dB	120dB	120dB
video kompresija	H.264, H.265 + Smart Encoding, MJPEG (5fps+15fps)	H.264, H.265 + Smart Encoding, MJPEG (5fps+15fps)	H.264, H.265 + Smart Encoding, MJPEG (5fps+15fps)	H.264, H.265 + Smart Encoding, MJPEG (5fps+15fps)	H.264, H.265 + Intelligens tōmōritēs, MJPEG (5fps+15fps)	H.264, H.265 + Smart Encoding, MJPEG (5fps+15fps)	H.264, H.265 + Smart Encoding, MJPEG (5fps+15fps)	H.264, H.265 + Smart Encoding, MJPEG (5fps+15fps)	H.264, H.265 + Smart Encoding, MJPEG (5fps+15fps)	H.264, H.265 + Smart Encoding, MJPEG (5fps+15fps)
video tok	1. 2MP 1920x1080 2. D1/4CIF 704x576	1. 2MP 1920x1080 2. D1/4CIF 704x576	1. 2MP 1080p 2. 720p max	1. 2MP 1080p 2. 720p max	1. 4MP (2688x1520) 2. 720p max	1. 4M (2688x1520) 2. 720p max	1. 4M (2688x1520) 2. 720p max	1. 4M (2688x1520) 2. 720p max	1. 8M/4K (3840x2160) 2. 1080p max	1. 8M/4K (3840x2160) 2. 1080p max
9:16 corridor način	-	-	±90°	±90°	±90°	±90°	±90°	±90°	±90°	±90°
OSD/privat.maska	8 / 4	8 / 4	4 / 4	4 / 4	4 / 4	4 / 4	4 / 4	4 / 4	4 / 4	4 / 4
avdio vhod	-	-	built-in microphone	built-in microphone	built-in microphone	built-in microphone	built-in microphone	built-in microphone	built-in microphone	built-in microphone
avdio izhod	-	-	built-in speaker	built-in speaker	built-in speaker	built-in speaker	-	-	-	-
VCA, analitika posnetkov	1x human body detection zone	1x human body detection zone	4x intrusion detection 4x crossline detection trigger based on vehicle & human body detection	4x intrusion detection 4x crossline detection trigger based on vehicle & human body detection	4x intrusion detection 4x crossline detection trigger based on vehicle & human body detection	4x intrusion detection 4x crossline detection trigger based on vehicle & human body detection	4x intrusion detection 4x crossline detection trigger based on vehicle & human body detection	4x intrusion detection 4x crossline detection trigger based on vehicle & human body detection	4x intrusion detection 4x crossline detection trigger based on vehicle & human body detection	4x intrusion detection 4x crossline detection trigger based on vehicle & human body detection
možnost shranj. posnetkov	-	-	microSD 128GB max	microSD 128GB max	microSD 128GB max	microSD 256GB max	microSD 256GB max	microSD 256GB max	microSD 256GB max	microSD 256GB max
ANR funkcije	-	-	records on disconnect	records on disconnect	records on disconnect	records on disconnect	records on network disconnect	records on network disconnect	records on network disconnect	records on network disconnect
reset tipka	-	-	-	-	-	-	-	1	1	1
zaščita pred vlago	IP67	IP67	IP67	IP67	IP67	IP67	IP67	IP67	IP67	IP67
antivandalna zašč.	-	-	-	-	-	-	-	-	-	IK10
vir napajanja, max poraba (W)	PoE (IEEE 802.3af), DC 12V±25%, 6W max	PoE (IEEE 802.3af), DC 12V±25%, 6W max	PoE (IEEE 802.3af), DC 12V±25%, 9W max	PoE (IEEE 802.3af), DC 12V±25%, 8W max	PoE (IEEE 802.3af), DC 12V±25%, 9W max	PoE (IEEE 802.3af), DC 12V±25%, 6W max	PoE (IEEE 802.3af), DC 12V±25%, 6W max	PoE (IEEE 802.3af), DC 12V±25%, 8.5W max	PoE (IEEE 802.3af), DC 12V±25%, 6.5W max	PoE (IEEE 802.3af), DC 12V±25%, 4.5W max
prenap. zaščita	-	-	4kV	4kV	4kV	4kV	2kV	6kV	4kV	4kV
teža	0.5kg	0.3kg	0.4kg	0.3kg	0.4kg	0.45kg	0.45kg	0.55kg	0.45kg	0.45kg
mere	191 x 73 x 71mm	Ø 118 x 96mm	191 x 75 x 74mm	Ø 118 x 95mm	191 x 75 x 74mm	191 x 73 x 71mm	Ø 118 x 96mm	206 x 74 x 74mm	191 x 73 x 71mm	Ø 118 x 96mm
podnožje kamere, montaža na steno	TR-JB05-B-IN	TR-JB03-I-IN TR-WM03-B-IN	TR-JB05-B-IN	TR-JB05-B-IN	TR-JB05-B-IN	TR-JB05-B-IN	TR-JB03-I-IN	TR-JB05-B-IN	TR-JB05-B-IN	TR-JB03-G-IN
dodatni opis	Starlight image quality in simplest possible camera w. human body detection	Starlight image quality in simplest possible camera w. human body detection	White LEDs for colour image in 0-24h 2way audio, IQ-based VCA	White LEDs for colour image in 0-24h 2way audio, IQ-based VCA	White LEDs for colour image in 0-24h 2way audio, IQ-based VCA	IQ-based VCA: vehicles and humans trigger, leaves, animals don't trigger	IQ-based VCA: vehicles and humans trigger, leaves, animals don't trigger	IQ-based VCA: vehicles and humans trigger, leaves, animals don't trigger	IQ-based VCA: vehicles and humans trigger, leaves, animals don't trigger	IQ-based VCA: vehicles and humans trigger, leaves, animals don't trigger

									
model	IPW-2125IQ-40SA	IPD-325IQ-28S	IPD-3615IQ-28SWAL	IPW-2225IQ-40SWX	IPW-2325IQ-28SZ	IPW-2325IQ-28SZH	IPD-3235-28SZ	IPW-2228IQ-40/605WXA	IPW-2128IQ-28WAL
opis	IQ Starlight PoE IP bullet w. built-in microphone	IQ Starlight PoE IP dome w. alarm IN/OUT + audio IN/OUT	IQ Starlight PoE IP turret/eyeball w. active deterrence & white LED	IQ Super Starlight PoE IP bullet w. white LED, 0-24h color image	IQ Starlight PoE IP bullet w. motorised AF lens	IQ Starlight PoE IP bullet w. motorised AF lens	Starlight PoE IP dome camera w. multiple I/O-ports	IQ Super Starlight 4K PoE IP bullet, white LED, 0-24h in color	IQ Starlight PoE IP bullet w. active deterrence & white LED
senzor	1/2.7" 5MP BSI CMOS	1/2.7" 5MP BSI CMOS	1/2.7" 5MP BSI CMOS	1/2.7" 5MP BSI CMOS	1/2.7" 5MP BSI CMOS	1/2.7" 5MP BSI CMOS	1/2.7" 5MP BSI CMOS	1/1.8" 8MP BSI CMOS	1/2.7" 8MP (4K) BSI CMOS
max. število sličic	30fps / 25fps	20fps / 25fps / 30fps	30fps / 25fps	30fps / 25fps	30fps / 25fps	25fps / 20fps	20fps / 25fps / 30fps	30fps / 25fps	20fps
leča	4mm f/1.6, 86.5°	2.8mm f/1.6, 97.7°	2.8mm f/1.6, 112.7°	4mm f/1.0, 80.2°	2.7-13.5mm f/1.2 106°-30°	2.7-13.5mm f/1.2 93.1°-26.8°	2.7-13.5mm f/1.2 93.4°-28.6°	4mm f/1.0 94.3°	2.8mm f/2.0, 112.4°
min. osvetlitev	0.003 lux color	0.003 lux color	0.003 lux color (0 lux wLED)	0.001 lux color (0 lux wLED)	0.002 lux color	0.002 lux color	0.002 lux color	0.001 lux szinesben (0 lux wLED)	0.01 lux color (0 lux wLED)
0 lux vir svetlobe, domet svetlobe	IR, 850nm 40m max	IR 850nm 30m max	IR 850nm + White LED 30m max / 30m max	2x warm white LED 30m max	IR, 850nm 50m max	IR, 850nm 50m max	IR, 850nm 30m max	2x meglefőhő LED 30m max	IR 850nm + White LED 30m max / 10m max
wide dynamic range	120 dB	120 dB	120 dB	120 dB	120 dB	120 dB (@20fps)	120 dB true WDR	120 dB	120 dB
video kompresija	H.264, H.265 + Smart Encoding, MJPEG (5fps+15fps)	H.264, H.265 + Smart Encoding, MJPEG (5fps+15fps)	H.264, H.265 + Smart Encoding, MJPEG (5fps+15fps)	H.264, H.265 + Smart Encoding, MJPEG (5fps+15fps)	H.264, H.265 + Smart Encoding, MJPEG (5fps+15fps)	H.264, H.265 + Smart Encoding, MJPEG (5fps+15fps)	H.264, H.265 + Smart Encoding, MJPEG (5fps+15fps)	H.264, H.265 + Smart Encoding, MJPEG (5fps+15fps)	H.264, H.265 + Smart Encoding, MJPEG (5fps+15fps)
video tok	1. 5MP 2880x1620 @25fps 2. D1 720x576 3. CIF 352x288	1. 5MP 2592x1944@20fps, 4MP 2560x1440@30fps 2. 2M 1080p 3. D1 720x576	1. 5MP 2880x1620 @25fps 2. D1 720x576 3. CIF 352x288	1. 5MP 2880x1620 @25fps 2. 720p 1280x720 max 3. CIF 352x288	1. 5MP 2880x1620 @25fps 2. 720p 1280x720 max 3. CIF 352x288	1. 5MP 2592x1944 @25/20fps 2. 1080p 1920x1080 max 3. CIF 352x288	1. 5MP 2592x1944@25fps 2. 1080p max, 3. D1/4CIF max	1. 8MP(4K) 3480x2160 30fps 2. 1080p 1920x1080 max 3. D1 720x576 max	1. 4K 3840x2160 @20fps 2. 1080p max 3. D1 720x576 max
9:16 corridor način	±90°	±90°	±90°	±90°	±90°	±90°	±90°	±90°	±90°
OSD/privatna maska	8 / 4	8 / 8	8 / 4	8 / 4	8 / 4	8 / 4	8 / 4	8 / 4	8 / 4
audio vhod	built-in microphone	35kΩ, 2Vpp	built-in microphone	35kΩ, 2Vpp	35kΩ, 2Vpp	35kΩ, 2Vpp	35kΩ, 2Vpp	built-in mic. + 35kΩ, 2Vpp	built-in microphone
audio izhod	-	600Ω, 2Vpp	built-in speaker	600Ω, 2Vpp	600Ω, 2Vpp	600Ω, 2Vpp	600Ω, 2Vpp	600Ω, 2Vpp	built-in speaker
VCA, smart analitika posnetkov, IQ analitika posnetkov	4x intrusion detection 4x crossline detection 4x entering/leaving area triggering based selectively on detecting vehicle, bicycle & human presence in the scene, detecting & following over 20 targets in scene	4x intrusion detection 4x crossline detection 4x entering/leaving area face capture advanced people counting (based od face tracking, define by line crossing or area crossing)	4x intrusion detection 4x crossline detection 4x entering/leaving area triggering based selectively on detecting vehicle, bicycle & human presence in the scene, detecting & following over 20 targets in scene	4x intrusion detection 4x crossline detection 4x entering/leaving area triggering based selectively on detecting vehicle, bicycle & human presence in the scene, detecting & following over 20 targets in scene	4x intrusion, 4x crossline detection, 4x entering/leaving area, triggering based selectively on detecting vehicle, bicycle & human presence in the scene, detecting & following over 20 targets in scene	4x intrusion detection 4x crossline detection 4x entering/leaving area face capture advanced people counting (based od face tracking, define by line crossing or area crossing)	4x cross line detection 4x intrusion detection defocus detection scene change detection face detection people counting audio detection	4x intrusion, 4x crossline detection, 4x intrusion, 4x crossline detection, 4x entering/leaving area, triggering based selectively on detecting vehicle, bicycle & human presence in the scene, detecting & following over 20 targets in scene	4x intrusion, 4x crossline detection, 4x entering/leaving area, triggering based selectively on detecting vehicle, bicycle & human presence in the scene, detecting & following over 20 targets in scene
mož. shranjevanja posnetkov	microSD 256GB max	microSD 256GB max	microSD 256GB max	microSD 256GB max	microSD 256GB max	microSD 256GB max	microSD 256GB max	microSD 256GB max	microSD 256GB max
ANR funkcije	records on network disconnect	records on network disconnect	records on network disconnect	records on network disconnect	records on network disconnect	records on network disconnect	rec. on network disconnect.	records on network disconnect	records on network disconnect
alarm I/O	-	1 / 1	-	1 / 1	1 / 1	1 / 1	1 / 1	1 / 1	-
zaščita pred vodo	IP67	IP67	IP67	IP67	IP67	IP67	IP67	IP67	IP67
antivandalna zaščita	-	IK10	-	IK10	IK10	IK10	IK10	IK10	-
vir napajanja, max poraba (W)	PoE (IEEE 802.3af), DC 12V±25%, 5W max	PoE (IEEE 802.3af), DC 12V±25%, 4.2W max	PoE (IEEE 802.3af), DC 12V±25%, 7.5W max	PoE (IEEE 802.3af), DC 12V±25%, 9W max	PoE (IEEE 802.3af), DC 12V±25%, 8W max	PoE (IEEE 802.3af), DC 12V±25%, 10W max	PoE (IEEE 802.3af), DC 12V±25%, 8.7W max	PoE (IEEE 802.3af), DC 12V±25%, 11W max	PoE (IEEE 802.3af), DC 12V±25%, 10.5W max
prenapetostna zašč.	2kV	2kV	4kV	4kV	6kV	6kV	4kV	4kV	2kV
teža	0.43kg	0.43kg	0.43kg	0.92kg	0.92kg	0.98kg	0.92kg	0.92kg	0.41kg
mere	156 x 63 x 63mm	Ø 109 x 81mm	Ø 110 x 95mm	246 x 86 x 85mm	245 x 86 x 72mm	245 x 86 x 72mm	Ø 148 x 112mm	246 x 86 x 85mm	191 x 75 x 74mm
podnožje kamere, montaža na steno	TR-JB05-A-IN TR-UP06-B-IN	TR-JB03-G-IN TR-WM03-D-IN	TR-JB03-G-IN TR-WM03-D-IN	TR-JB07-D-IN TR-UP06-B-IN	TR-JB07-D-IN TR-UP06-B-IN	TR-JB07-D-IN TR-UP06-B-IN	TR-JB04-C-IN TR-WM04-IN	TR-JB07-D-IN TR-UP06-B-IN	TR-JB05-B-IN
dodatni opis	IQ-based VCA: vehicles and humans trigger, leaves and animals don't trigger	Advanced people counting face capture VCA false alarm filtering	IQ-based VCA, active deterrence: sound+light alarm linkage white LEDs for 0-24h color image	IQ-based VCA, alarm I/O Super Starlight nighttime image white LEDs for 0-24h color image	IQ-based VCA, triggers only on humans & vehicles, alarm I/O, motorised AF lens for easy setup	IQ-based VCA, triggers only on humans & vehicles, alarm I/O, motorised AF lens for easy setup	Starlight image, VCA, alarm I/O, 12V DC out on PoE	IQ-based VCA, alarm I/O Super Starlight nighttime image white LEDs for 0-24h color image	IQ-based VCA, active deterrence: sound+light alarm linkage white LEDs for 0-24h color image



model	PTZ-6751Q-X45WAL	PTZ-6424IQ-X25S	PTZ-6622IQ-X25-S60	PTZ-6624IQ-X33S	PTZ-6854-X38UP-VL	TIC2621 SR-F3-4F4AC-VD	IPW-LPR47-X10SZ	IPW-262ER9-DUZIT-ME	model	
opis	IQ Starlight PoE IP PTZ x4 camera w. active deterrence & white LED	IQ Starlight PoE IP PTZ x25 zoom, 4 Megapixels, vandalproof 6.5"	IQ Starlight PoE IP PTZ x25 zoom, 60 fps max	IQ Starlight PoE IP PTZ x33 zoom, 4 Megapixels resolution	IQ Super Starlight PoE IP PTZ x38	Dual spectrum PoE IP thermal camera + 4MP Starlight bullet camera (compatible w. NVR-C)	IQ LPR-reading PoE IP bullet w. motorised AF lens	IQ LPR-reading PoE IP bullet w. motorised AF lens	opis	
senzor	1/2.7" 5MP BSI CMOS	1/2.8" 4MP CMOS	1/2.8" 2MP CMOS	1/2.8" 4MP CMOS	1/1.8" 4MP CMOS	V _{0.2} bolometer thermal 12µm, 256x192px + 1/1.8" 4MP CMOS	1/2.8" 2MP CMOS	1/2.8" 2MP CMOS	senzor	
max. število sličic	30fps / 25fps	30fps / 25fps	60fps (30fps / 25fps @2/3 str.)	30fps / 25fps	60fps (30fps / 25fps @2/3 str.)	30fps / 25 fps	25 fps	30fps / 25 fps	max. število sličic	
leča	2.8-12mm f/1.6, 104.1°-30.6° 4x zoom motorised autofocus lens	4.8-120mm f/1.5-3.8, 52.2°-2.74° 25x zoom motorised AF lens	5-125mm f/1.5-4, 54.4°-2.68° 25x zoom motorised AF lens	4.5-148.5mm f/1.5-4.1, 53°-2.1° 33x zoom motorised AF lens	5.7-216.6mm f/1.3-4.6, 58°-2° 38x zoom motorised AF lens	3.2mm f/1.1 57° (3.75mRad) + 4mm f/1.4 89.9°	4.7-47mm f/1.6 65°-9° motorised autofocus	2.8-12mm f/1.6 97°-35° motorised autofocus	leča	
min. osvetlitev (barvno)	0.003 lux @color	0.003 lux @color	0.001 lux @color	0.003 lux @color	0.0005 lux @color	0.001 lux @color, 0.0005 lux BW	0.04 lux (quick shutter)	0.02 lux (quick shutter)	min. osvetlitev	
0 lux vir svetlobe, domet	IR 50m max + White LED 10m	IR 850nm, 100m max	IR 850nm, 150m max	IR 850nm, 150m max	IR 850nm, 250m max	IR, 850nm 50m max (0.0 lux)	IR, 850nm 50m max (1/500s!)	IR, 850nm 100m max	0 lux, domet	
wide dynamic range	120dB true WDR	120dB true WDR	120dB true WDR	120dB true WDR	120dB true WDR	120 dB	120 dB	120 dB, default ON	wide dynamic range	
pan obseg / hitrost	345° / 0.1°/s - 50°/s	360° endless / 0.1°/s - 200°/s	360° endless / 0.1°/s - 200°/s	360° endless / 0.1°/s - 200°/s	360° endless / 0.1°/s - 180°/s	H.264, H.265 + Smart Encoding, two independent video channels	H.264, H.265 + Smart Encoding, JPEG photo upload (ftp)	H.264, H.265 + Smart Encoding, JPEG photo upload (ftp)	video kompresija	
tilt obseg / hitrost	-10° - 110° / 0.1°/s - 40°/s	-15°- 90° auto flip / 0.1 - 120°/s	-15°- 90° auto flip / 0.1 - 200°/s	-15°- 90° auto flip / 0.1 - 200°/s	-20°- 90° auto flip / 0.1 - 180°/s	1. 1280x720@25fps thermal 2. 4M (2688x1520)@25fps	1. 2MP 1920x1080 @25fps 2. 720p max, default OFF 3. D1 max, default OFF	1. 2MP 1920x1080 @25fps 2. 2MP max, default OFF 3. D1 max, default OFF	video tok	
prednast./patruliranje	256 / 16 (180s min)	1024 / 32 (15s min)	1024 / 32 (15s min)	1024 / 32 (15s min)	1024 / 32 (15s min)	8 OSD areas	distinct video / JPG snapshot OSD	distinct video / JPG snapshot OSD	OSD	
samodejno sledenje	general object tracking	VCA triggered + general tracking	VCA triggered + general tracking	VCA triggered + general tracking	VCA triggered + general tracking	built in mic, 35kΩ, 2Vpp	speaker, 600Ω, 2Vpp	600Ω, 2Vpp	audio vhod	
video kompresija	H.264, H.265 + Smart Encoding, MJPEG (5fps+15fps)	H.264, H.265 + Smart Encoding, MJPEG (5fps+15fps)	H.264, H.265 + Smart Encoding, MJPEG (5fps+15fps)	H.264, H.265 + Smart Encoding, MJPEG (5fps+15fps)	H.264, H.265 + Smart Encoding, MJPEG (5fps+15fps)	600Ω, 2Vpp	600Ω, 2Vpp	600Ω, 2Vpp	audio izhod	
video tok	1. 5MP 2880x1620 max 2. 720p 1280x720 max 3. D1 720x576 max	1. 4MP, 2688x1520 max 2. 1080p, 1920x1080 max 3. D1 720x576 max + BNC (PAL) output	1, 2: 2MP, 1920x1080@60fps 3: D1 720x576@60fps max + BNC (PAL) output	1. 4MP, 2688x1520 max 2. 1080p, 1920x1080 max 3. D1 720x576 max + BNC (PAL) output	1. 4MP, 2688x1520 max @60fps 2. 1080p, 1920x1080 max@60fps 3. D1 720x576 max@60fps 8 / 24 (4 per preset)	Thermal: max 10 fire detection zones, smoking detection w. alarm, temperature min/max alarms up to 12 rules, above/bellow X°C in -20°C to +150°C range, +/-8°C precision.	vehicle detection by line crossing, license plate recognition, local list configuration (*.csv), NVR list configuration (32IQ, 64IQ)	vehicle detection by line crossing, license plate recognition, local list configuration (*.csv), NVR list configuration (16B, 32IQ, 64IQ)	VCA, smart analitika posnetkov,	
OSD / privatna maska	8 / 8	8 / 24 (4 per preset)	8 / 24 (4 per preset)	8 / 24 (4 per preset)	35kΩ, 2Vpp	Visible: intrusion detection, line crossing, based on human/vehicle recognition, active deterrence w. .mp3 sound and red-blue light	records on network disconnect ftp snapshots & live stream	records on network disconnect ftp snapshots & live stream	mož. shranjevanja posnetkov	
audio vhod	built-in microphone	35kΩ, 2Vpp	35kΩ, 2Vpp	35kΩ, 2Vpp	600Ω, 2Vpp	microSD	microSD	microSD		
audio izhod	built-in speaker	600Ω, 2Vpp	600Ω, 2Vpp	600Ω, 2Vpp	600Ω, 2Vpp	256GB max	128GB max	128GB max		
VCA, smart analitika posnetkov	4x intrusion detection, 4x crossline detection, 4x entering/leaving area, triggering based selectively on detecting vehicle, bicycle & human presence in the scene, detecting & following over 20 targets in scene. The four zones of an alarm type can trigger to different object types.					256GB max	2 / 1, 1x RS485	2 / 1, 1x RS485	IP66	
IQ analitika posnetkov	Active deterrence means, camera can play an .mp3 audio on alarm event (linked with light signalling) to speaker or audio line					2 / 1, 1x RS485	IP66	IP66		
možnost shranjevanja posnetkov	microSD with ANR function	microSD with ANR function	microSD with ANR function	microSD with ANR function	microSD with ANR function	256GB max	2 / 1, 1x RS485	IP66		
alarm I/O, RS485	- / - / -	2 / 1, 1x RS485	2 / 1, 1x RS485	2 / 1, 1x RS485	2 / 1, 1x RS485	IP66	IP66	IP66		
zaščita pred vlago	IP66	IP67	IP66	IP66	PoE++ (IEEE 802.3at), AC/DC 24V±25% 1.5A, 51W max	6kV	6kV	6kV		
vir napajanja, max poraba (W)	PoE (IEEE 802.3af), DC 12V±25%, 18W max	PoE+ (IEEE 802.3at), DC 12V±25% 3A, 21W max	PoE+ (IEEE 802.3at), AC/DC 24V±25% 1.5A, 25W max	PoE+ (IEEE 802.3at), AC/DC 24V±25% 1.5A, 25W max	AC/DC 24V±25% 1.5A, 25W max	6kV	6kV	6kV		
prenapetostna zaščita	4kV	6kV	6kV	6kV	6kV	-40°C - 70°C, ≤95%RH	-40°C - 70°C, ≤95%RH	-40°C - 70°C, ≤95%RH		
temp. območje delov.	-20°C - 60°C, ≤95%RH	-40°C - 70°C, ≤95%RH	-40°C - 65°C, ≤95%RH	-40°C - 65°C, ≤95%RH	-40°C - 65°C, ≤95%RH	9.7kg	9.7kg	9.7kg		
teža	0.87kg	3.05kg	5.8kg	5.8kg	5.8kg	Ø 270 x 497mm	Ø 270 x 497mm	Ø 270 x 497mm		
mere	Ø 133 x 274mm	Ø 166 x 295mm	Ø 227 x 385mm	Ø 227 x 385mm	Ø 227 x 385mm	TR-WE45-IN included,	TR-WE45-IN included,	TR-WE45-IN included,		
podnožje kamere, montaža na steno/drog	TR-JB07-D-IN TR-UP06-B-IN	TR-WE45-IN included, TR-JB12-IN, TR-UP08-A-IN, TR-UC08-A-IN, TR-CE45-IN, TR-UF45-A-IN, TR-SE45-A-IN	TR-WE45-IN included, TR-JB12-IN, TR-UP08-A-IN, TR-UC08-A-IN, TR-CE45-IN, TR-UF45-A-IN, TR-SE45-A-IN	TR-WE45-IN included, TR-JB12-IN, TR-UP08-A-IN, TR-UC08-A-IN, TR-CE45-IN, TR-UF45-A-IN, TR-SE45-A-IN	TR-WE45-IN included, TR-JB12-IN, TR-UP08-A-IN, TR-UC08-A-IN, TR-CE45-IN, TR-UF45-A-IN, TR-SE45-A-IN	IK10	IK10	IK10		
dodatni opis	IQ-based VCA, active deterrence: .mp3 sound + red-blue light alarm linkage white LEDs for 0-24h color image	IQ-based VCA, high-end, high speed PTZ in smallest possible housing	IQ-based VCA with auto object tracking, heating/cooling, active snow removal, PTZ homing, 60 fps high-speed video	IQ-based VCA with auto object tracking, heating/cooling, active snow removal, PTZ home position	IQ-based VCA with auto object tracking, heating/cooling, active snow removal	IP67	IP67	IP67		
						IK10	IK10	IK10		
						PoE (IEEE 802.3af/at), DC 12V±25%, 12W max	PoE (IEEE 802.3at), DC 12V±25%, AC 24V±25% 15W max	PoE (IEEE 802.3at), DC 12V±25%, AC 24V±25% 15W max	vir napajanja, max poraba (W)	
						4kV	4kV	4kV	prenapetostna zašč.	
						2kg	2kg	1.85kg	teža	
						354 x 104 x 116mm	386 x 126 x 130mm	306 x 104 x 94mm	mere	
						the junction box is part of the camera base	the junction box is part of the camera base	TR-JB07-D-IN TR-UP06-B-IN	podnožje kamere, montaža na steno	



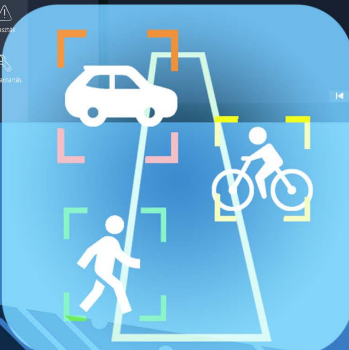
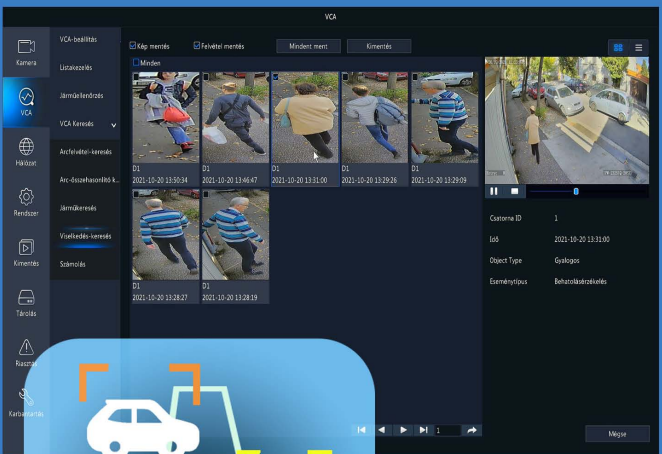
Video snemanje, iskanje objektov



Vsi NVR-ji upravljajo IP-kamere z ločljivostjo 4K (8 megapikselov)
-izhod HDMI do ločljivosti 4K na vseh videorekorderjih Videosec NVR
-podpora profilov ONVIF S, G in T, dostop do snemalnika prek ONVIF
-IQ analitično upravljanje alarmov, iskanje po vrsti objekta



-upravljanje dveh in treh neodvisnih monitorjev
-NVR-ji, povezani z dvema neodvisnima podomrežjema
-NVR-ji PoE s podporo za kable UTP dolžine več kot 200 m
-Alarmi, ki temeljijo na IQ, takojšnji seznam z možnostjo žigosanja v pogledu v živo
-filtriranje alarmov za pešce, vozila, registrske tablice, ...
-Visoka zmogljivost, nizka poraba energije, temelji na tehnologijah MStar in Intel
-Takojšnje pošiljanje opozorilnih sporočil na mobilni telefon (GuardViewer), pogled v živo, predvajanje, seznam alarmnih dogodkov



NVR-302-16C



NVR-302-16C-P16



NVR-304-32C

NVR-302-16C	NVR-302-16C-P16	NVR-304-32C	model opis
16 ch. 12MP 2HDD NVR	16 ch. 12MP 2HDD PoE NVR	32 ch. 12MP 4HDD NVR	opis
320 Mbps @ 16cs	320 Mbps @ 16cs	320 Mbps @ 32cs	dohodna pasovna širina
320 Mbps	320 Mbps	320 Mbps	odhodna pasovna širina
1x RCA mono	1x RCA mono	1x RCA mono	avdio vhod za mikrofona
MyDDNS, domain, IP cím	MyDDNS, domain, IP cím	MyDDNS, domain, IP cím	dodajanje IP kamere z oddaljene lokacije
1x HDMI 4K@30Hz 1x 1080P@60Hz	1x HDMI 4K@30Hz 1x 1080P@60Hz	1x HDMI 4K@30Hz 1x 1080P@60Hz	povezava z zaslonom
displays contents are independent	displays contents are independent	displays contents are independent	HDMI, VGA
1x RCA, HDMI	1x RCA, HDMI	1x RCA, HDMI	avdio izhod
max 12MP (4K+)@30fps/ch S, G, T profiles 20MP@30fps max (1x12MP, 2x 4K, 5x 4MP, 10x 1080p, 16x 720p)	max 12MP (4K+)@30fps/ch S, G, T profiles 20MP@30fps max (1x12MP, 2x 4K, 5x 4MP, 10x 1080p, 16x 720p)	max 12MP (4K+)@30fps/ch S, G, T profiles 20MP@30fps max (1x12MP, 2x 4K, 5x 4MP, 10x 1080p, 16x 720p, 32x D1)	res.posnetkov, vsi kanali ONVIF profil
3/4/5/7/9/10/12/16ch	3/4/5/7/9/10/12/16ch	3/4/5/7/9/10/12/16/32ch	kapaciteta dekodiranja (skupno pogledov v živo/posnetkov)
intrusion detection, cross line detection, audio detection, face detection, human body detection, defocus/scene change, object left/removed, PTZ auto tracking, handling LPR lists w. alarms, behaviour event search, vehicle/bike/person filter, face listing, face search on NVR GUI + WEB, people counting, flow control (in, out, remain)	intrusion detection, cross line detection, audio detection, face detection, human body detection, defocus/scene change, object left/removed, PTZ auto tracking, handling LPR lists w. alarms, behaviour event search, vehicle/bike/person filter, face listing, face search on NVR GUI + WEB, people counting, flow control (in, out, remain)	intrusion detection, cross line detection, audio detection, face detection, human body detection, defocus/scene change, object left/removed, PTZ auto tracking, handling LPR lists w. alarms, behaviour event search, vehicle/bike/person filter, face listing, face search on NVR GUI + WEB, people counting, flow control (in, out, remain)	VCA zaznavanje in alarmi
2 SATA, max 2x 6TB 2 x RJ45 1000M Gbe	2 SATA, max 2x 10TB 2 x RJ45 1000M Gbe	4 SATA, max 4x 6TB RAID1, RAID5 2 x RJ45 1000M Gbe	HDD, eSATA, RAID LAN vmesnik
-	16x PoE+ IEEE 802.3at/af midspan/B 30W/port max, 240W max	-	PoE, pinout, PoE kapaciteta
2 x USB2.0, 1 x USB3.0 1 x RS485	1 x USB2.0, 1 x USB3.0 1 x RS485	2 x USB2.0, 1 x USB3.0 1 x RS485	USB vmesnik, serijski priključek
be 8, ki 2 + kamera I/O	be 8, ki 2 + kamera I/O	be 16, ki 4 + kamera I/O	alarm I/O
12V DC, 3.3A ≤12W (w/o HDD) -10°C ~ 55°C	230VAC ≤ 15 W (w/o HDD) -10°C ~ 55°C	12V DC, 5A ≤12W (w/o HDD) -10°C ~ 55°C	napajanje poraba energije
380 x 315 x 53mm - 1U ≤1.8kg	380 x 315 x 53mm - 1U ≤ 2.6kg	440 x 344 x 48mm - 1U ≤3kg	temp.območje delovanja mere teža (brez HDD)



model	NVR-301-04LH	NVR-301-08LH	NVR-301-04LH-P4	NVR-301-08LH-P8	NVR-301-16LH-P8	NVR-301-08LX-P8	NVR-301-16XH	NVR-302-32S	NVR-304-32IQ	NVR-308-64IQ	model
opis	4 ch. 4K NVR	8 ch. 4K NVR	4 ch. 4K PoE NVR	8 ch. 4K PoE NVR	16ch, 8x PoE 4K NVR	8 ch. 4K PoE NVR	16 ch. 4K NVR	32 ch. 4K 2HDD NVR	32 ch. 4K 4HDD IQ NVR	64 ch. 4K 8HDD IQ NVR	opis
dohodna pasovna širina	64 Mbps @ 4ch	64 Mbps @ 8ch	64 Mbps @ 4ch	64 Mbps @ 8ch	64Mbps @ 16ch	80 Mbps @ 8ch	64 Mbps @ 16ch	160 Mbps @ 32ch	384Mbps @ 32ch	384Mbps @ 64ch	dohodna pasovna širina
odhodna pasovna širina	48 Mbps	48 Mbps	48 Mbps	48 Mbps	48 Mbps	64 Mbps	64 Mbps	64 Mbps	384 Mbps	384 Mbps	odhodna pasovna širina
avdio vhod za mikrofonski	-	-	-	-	-	1x RCA mono	1x RCA mono	1x RCA mono	1x RCA mono	1x RCA mono	avdio vhod za mikrofonski
podatki o IP kamerah z oddaljenimi lokacijami	MyDDNS, domain, IP address	MyDDNS, domain, IP address	MyDDNS, domain, IP address	MyDDNS, domain, IP address	MyDDNS, domain, IP address	MyDDNS, domain, IP address	MyDDNS, domain, IP address	MyDDNS, domain, IP address	MyDDNS, domain, IP address	MyDDNS, domain, IP address	podatki o IP kamerah z oddaljenimi lokacijami
povezava z zaslonom HDMI, VGA	1x HDMI 4K@30Hz 1x 1080P@60Hz	1x HDMI 4K@30Hz 1x 1080P@60Hz	1x HDMI 4K@30Hz 1x 1080P@60Hz	1x HDMI 4K@30Hz 1x 1080P@60Hz	1x HDMI 4K@30Hz 1x 1080P@60Hz	1x HDMI 4K@30Hz 1x 1080P@60Hz	1x HDMI 4K@30Hz 1x 1080P@60Hz	1x HDMI 4K@30Hz 1x 1080P@60Hz	2x HDMI 4K@30Hz 1x 1080P@60Hz	2x HDMI 4K@30Hz 1x 1080P@60Hz	povezava z zaslonom HDMI, VGA
avdio izhod	1x 3.5mm Jack, HDMI	1x 3.5mm Jack, HDMI	1x 3.5mm Jack, HDMI	1x RCA, HDMI	1x RCA, HDMI	1x RCA, HDMI	1x RCA, HDMI	1x RCA, HDMI	1x RCA, HDMI	1x RCA, HDMI	avdio izhod
res.posnetkov, vsi kanali ONVIF profil	max 4K (8MP)@30fps/ch S, G, T profiles	max 4K (8MP)@30fps/ch S, G, T profiles	max 4K (8MP)@30fps/ch S, G, T profiles	max 4K (8MP)@30fps/ch S, G, T profiles	max 4K (8MP)@30fps/ch S, G, T profiles	max 4K (8MP)@30fps/ch S, G, T profiles	max 4K (8MP)@30fps/ch S, G, T profiles	max 4K (8MP)@30fps/ch S, G, T profiles	max 12MP@30fps/ch S, G, T profiles	max 12MP@30fps/ch S, G, T profiles	res.posnetkov, vsi kanali ONVIF profil
kapaciteta dekodiranja (skupno pogledov v živo/posnetkov)	12MP@25fps max, 8MP@30fps max (1x 4K, 2x 4MP, 4x 1080p)	12MP@25fps max, 8MP@30fps max (1x 4K, 2x 4MP, 4x 1080p)	12MP@25fps max, 8MP@30fps max (1x 4K, 2x 4MP, 4x 1080p)	12MP@25fps max, 8MP@30fps max (1x 4K, 2x 4MP, 4x 1080p)	8MP@30fps max, (1x 4K, 1x 5MP, 2x 4MP, 4x 1080p, 8x 720p, 16x D1)	16MP@30fps max (2x 4K, 4x 4MP, 8x 1080p)	16MP@30fps max (2x 4K, 4x 4MP, 8x 1080p, 16x 720p)	16MP@30fps max (2x 4K, 4x 4MP, 8x 1080p, 16x 720p, 32x D1)	32MP@30fps max (2x 12MP, 4x 4K, 8x 4MP, 16x 1080p, 32x D1)	32MP@30fps max (2x 12MP, 4x 4K, 8x 4MP, 16x 1080p, 64x D1)	kapaciteta dekodiranja (skupno pogledov v živo/posnetkov)
corridor način zaslona	3/4ch	3/4/5/7/9ch	3/4ch	3/4/5ch	3/4/5/7/9/10/12/16ch	3/4/5ch	3/4/5/7/9/10/12/16ch	3/4/5/7/9/10/12/16/32ch	3/4/5/7/9/10/12/16/32ch	3/4/5/7/9/10/12/16/32ch	corridor način zaslona
VCA zaznavanje in alarmi	intrusion detection, cross line detection, audio detection face detection, human body detection	intrusion detection, cross line detection, audio detection face detection, human body detection	intrusion detection, cross line detection, audio detection face detection, human body detection	intrusion detection, cross line detection, audio detection face detection, human body detection	intrusion detection, cross line detection, audio detection face detection, human body detection	intrusion detection, cross line detection, audio detection face detection, human body detection, defocus/scene change, object left/removed, PTZ auto tracking	intrusion detection, cross line detection, audio detection face detection, human body detection, defocus/scene change, object left/removed, PTZ auto tracking	intrusion detection, cross line detection, audio detection face detection, human body detection, defocus/scene change, object left/removed, PTZ auto tracking	intrusion detection, cross line detection, audio detection face detection, human body detection, defocus/scene change, object left/removed, PTZ auto tracking	intrusion detection, cross line detection, audio detection face detection, human body detection, defocus/scene change, object left/removed, PTZ auto tracking	VCA zaznavanje in alarmi
VCA iskanje	behaviour event search face snapshot listing on NVR GUI	behaviour event search face snapshot listing on NVR GUI	behaviour event search face snapshot listing on NVR GUI	behaviour event search face snapshot listing on NVR GUI	behaviour event search face snapshot listing on NVR GUI	behaviour event search vehicle/bike/person filter face snapshot listing on NVR GUI	behaviour event search vehicle/bike/person filter face snapshot listing on NVR GUI	behaviour event search vehicle/bike/person filter face snapshot listing on NVR GUI	behaviour event search vehicle/bike/person filter face listing, face search on NVR GUI + WEB	behaviour event search vehicle/bike/person filter face listing, face search on NVR GUI + WEB	VCA iskanje
statistične funkcije	-	-	-	-	-	people counting, flow control (in, out, remain)	people counting, flow control (in, out, remain)	people counting, flow control (in, out, remain)	people counting, flow control (in, out, remain)	people counting, flow control (in, out, remain)	statistične funkcije
HDD, eSATA, RAID	1 SATA, max 6TB	1 SATA, max 6TB	1 SATA, max 6TB	1 SATA, max 6TB	1 SATA, max 6TB	1 SATA, max 6TB	1 SATA, max 6TB	2 SATA, max 2x 6TB	4 SATA, max 4x 10TB 1x eSATA, RAID 1, 5	8 SATA, max 8x 10TB 1x eSATA, RAID 1, 5, 6, 10	HDD, eSATA, RAID
LAN vmesnik	1 x RJ45 100M	1 x RJ45 100M	1 x RJ45 100M	1 x RJ45 100M	1 x RJ45 100M	1 x RJ45 100M	1 x RJ45 100M	2 x RJ45 1000M Gbe	2 x RJ45 1000M Gbe	2 x RJ45 1000M Gbe	LAN vmesnik
PoE, pinout, PoE kapaciteta	-	-	4x PoE+ IEEE 802.3at/af midspan/B 54W max	8x PoE+ IEEE 802.3at/af midspan/B 75W max	8x PoE+ IEEE 802.3at/af midspan/B 75W max	8x PoE+ IEEE 802.3at/af midspan/B 75W max	-	-	-	-	PoE, pinout, PoE kapaciteta
USB vmesnik, serijski priključek	2 x USB2.0	2 x USB2.0	2 x USB2.0	2 x USB2.0	2 x USB2.0	1 x USB2.0 1 x USB3.0	1 x USB2.0 1 x USB3.0	2 x USB2.0 1 x USB3.0	2 x USB2.0, 1 x USB3.0 1 x RS485, 1 x RS232	2 x USB2.0, 1 x USB3.0 1 x RS485, 1 x RS232	USB vmesnik, serijski priključek
alarm I/O	camera alarm I/O only	camera alarm I/O only	camera alarm I/O only	camera alarm I/O only	camera alarm I/O only	camera alarm I/O only	camera alarm I/O only	camera alarm I/O only	in 16, out 4 + camera I/O	in 16, out 4 + camera I/O	alarm I/O
napajanje	12V DC, 1.5A	12V DC, 1.5A	48V/1.35A	52V DC, 1.8A	52V DC, 1.8A	52V DC, 1.8A	12V DC, 1.5A	12V DC, 3.3A	230VAC	230VAC	napajanje
poraba energije	≤5W (without HDD)	≤5W (without HDD)	≤9W (without HDD)	≤9W (without HDD)	≤9W (without HDD)	≤9W (without HDD)	≤9W (without HDD)	≤15W (without HDD)	≤ 25 W (without HDD)	≤ 25 W (without HDD)	poraba energije
temp.območje delovanja	-10°C ~ 55°C	-10°C ~ 55°C	-10°C ~ 55°C	-10°C ~ 55°C	-10°C ~ 55°C	-10°C ~ 55°C	-10°C ~ 55°C	-10°C ~ 55°C	-10°C ~ 55°C	-10°C ~ 55°C	temp.območje delovanja
mere	260 x 240 x 46mm	260 x 240 x 46mm	205 x 205 x 46mm	270 x 205 x 46mm	270 x 205 x 46mm	270 x 205 x 47mm	260 x 240 x 47mm	380 x 315 x 49mm - 1U	442 x 426 x 89mm - 2U	442 x 426 x 89mm - 2U	mere
teža (brez HDD)	≤0.98kg	≤0.98kg	≤0.6kg	≤0.8 kg	≤0.8 kg	0.7 kg	1.3kg	≤2.48kg	≤ 5.7kg	≤ 5.7kg	teža (brez HDD)

	IPD-3615IQ-28SWAL IPD-325IQ-28S IPD-328LSA-28F						
		TR-JB03-G-IN	TR-WM03-D-IN	TR-UP06-C-IN	TR-A01-IN	TR-CM24-IN	TR-SE24-A-IN

	IPD-3612LA-28F IPD-3612LS-28F IPD-3614LSA-28F IPD-3612LSA-28WAL						
		TR-JB03-I-IN	TR-WM03-B-IN	TR-UP06-IN	TR-A01-IN	TR-CM24-IN	TR-SE24-A-IN

	IPD-3634-28Z						
		TR-JB03-H-IN	TR-WM03-B-IN	TR-UP06-IN	TR-A01-IN	TR-CM24-IN	TR-SE24-A-IN

	IPD-3235IQ-28SZA IPD-3234L-28ZD IPD-3235-28SZ IPF-868ER-F18-B						
		TR-JB04-C-IN	TR-WM04-IN	TR-UP06-C-IN	TR-A01-IN	TR-CM24-IN	TR-SE24-A-IN

	PTZ-6424IQ-X25S PTZ-6622IQ-X25-S60 PTZ-6624IQ-X33S PTZ-6854-X38UP-VL PTZ-6322SR-X22P-C									
		TR-WE45-IN	TR-JB12-IN	TR-UP08-A-IN	TR-UC08-A-IN	TR-A01-IN	TR-UF45-A-IN	TR-CE45-IN	TR-SE45-IN	TR-SE45-A-IN

	IPW-2122LS-40F IPW-2122LSA-28WAL IPW-2124LSA-28WAL IPW-2124LSA-28/40F IPW-2128IQ-28WAL IPW-2128LSA-28F IPW-2324LSA-28Z					
		TR-JB05-B-IN	TR-UP06-C-IN	TR-A01-IN	TR-CM24-IN	TR-SE24-A-IN

	IPW-2122LA-28F IPW-2122-28WIFI IPW-2125IQ-40SA							
		TR-JB05-A-IN	TR-JB07-D-IN	TR-UP06-B-IN	TR-UP06-C-IN	TR-A01-IN	TR-CM24-IN	TR-SE24-A-IN

	IPW-2225IQ-40SWX IPW-2325IQ-28SZ/H PTZ-675IQ-X45WAL IPW-262ER9-DUZIT-ME IPW-2322L-28ZD IPW-2322-28Z IPW-2322S-28Z-C IPW-2222-60S							
		TR-JB06-A-IN	TR-JB07-D-IN	TR-UP06-B-IN	TR-UP06-C-IN	TR-A01-IN	TR-CM24-IN	TR-SE24-A-IN

model	PS04FE+2FE-V2	PS-0004EP-2E	PS04FE+2FE	PS04PGE+1PD	PS08FE+2FE	PS08FE+2GE	PS08FE+1GE+1SFP	PSH04GE+4GE	PS16FE+2GE+2SFP	PS24FE+2GE+2SFP
opis	4 + 2 ports PoE switch with long cable CCTV mode	4 + 2 ports PoE switch with long cable CCTV mode	4 + 2 ports PoE switch with long cable CCTV mode	4 + 1 ports Gbe PoE switch powered from LAN PoE	8 + 2 ports PoE switch with long cable CCTV mode	8 + 2 ports PoE switch with long cable CCTV mode	8 + 1 + 1 ports PoE switch with Gbe SFP uplink	4 + 4 ports Gbe PoE++ switch (4x High PoE)	16 + 2 + 2 ports PoE switch with 2xGbe + 2x SFP uplink	24 + 2 + 2 ports PoE switch with 2xGbe + 2x SFP uplink
uplink vrata, hitrost	2x 100Mbps	2x 100Mbps	2x 100Mbps	1x 1000Mbps	2x 100Mbps	2x 1000Mbps	1x 1000Mbps SFP + 1x Gbe	4x 1000Mbps	2x 1000Mbps SFP + 2x Gbe	2x 1000Mbps SFP + 2x Gbe
PoE vrata hitrost, PoE standard	4x100Mbps, IEEE802.3 af/at (PoE 15W, PoE+ 30W) Max 45W on 1. port	4x 100Mbps IEEE802.3af/at (PoE 15W, PoE+ 30W)	4x 100Mbps, IEEE802.3 af/at (PoE 15W, PoE+ 30W)	4x 1000Mbps, IEEE802.3 af/at (PoE 15W, PoE+ 25W)	8x100Mbps, IEEE802.3 af/at (PoE 15W, PoE+ 30W) Max 45W on 1. port	8x 100Mbps, IEEE802.3 af/at (PoE 15W, PoE+ 30W)	8x 100Mbps, IEEE802.3 af/at (PoE 15W, PoE+ 30W)	4x 1000Mbps, IEEE802.3 af/at/bt (PoE++ 60W/port)	16x 100Mbps, IEEE802.3 af/at (PoE 15W, PoE+ 32W)	16x 100Mbps, IEEE802.3 af/at (PoE 15W, PoE+ 32W)
PoE kapaciteta	40W, depends on power-in	55W, a bemenő táptól függ	60W	55Wmax, depends on PoE in	120W	120W	120W	150W	240W	370W
RJ45 pinout	endspan / A (1/2+, 3/6-)	endspan / A (1/2+, 3/6-)	endspan / A (1/2+, 3/6-)	endspan / A (1/2+, 3/6-)	endspan / A (1/2+, 3/6-)	endspan / A (1/2+, 3/6-)	endspan / A (1/2+, 3/6-)	endspan+midspan / A + B	endspan / A (1/2+, 3/6-)	endspan / A (1/2+, 3/6-)
prenapetostna zaščita*	2kV contact, 4kV OTA	2kV érintési, 4kV levegő	4kV contact, 6kV OTA	4kV contact, 6kV OTA	2kV contact, 4kV OTA	4kV contact, 6kV OTA	4kV contact, 6kV OTA	4kV contact, 6kV OTA	4kV contact, 6kV OTA	4kV contact, 6kV OTA
Zahtevana moč	200-240V AC	200-240V AC	100-240V AC	48V-55V DC	200-240V AC	100-240V AC	100-240V AC	100-240V AC	100-240V AC	100-240V AC
Napajanje	external, 45W, 53V DC	external, 60W, 52V DC	internal, 65W, 53V DC	PoE+ or POE-60W	external, 108W, 53V DC	internal, 125W, 53V DC	internal, 125W, 53V DC	internal, 155W, 53V DC	internal, 270W, 53V DC	internal, 400W, 53V DC
mere	140 x 76 x 28 mm	160 x 92.5 x 28 mm	168 x 93 x 32 mm	140 x 93 x 27 mm	168 x 86 x 32 mm	220 x 150 x 43 mm	220 x 150 x 43 mm	280 x 180 x 43 mm	440 x 230 x 45 mm	440 x 230 x 45 mm
teža	0.8 kg	0.45 kg	0.8 kg	1 kg	1 kg	1.9 kg	1.9 kg	2.2 kg	4.5 kg	4.5 kg
dodatni opis	1k MAC table CCTV mode: PoE port speeds limited to 10Mbps, cable range extends to over 200m	1k MAC table CCTV mode: PoE port speeds limited to 10Mbps, cable range extends to over 200m	4k MAC table CCTV mode: PoE port speeds limited to 10Mbps, cable range extends to over 200m	4k MAC table 5x Gigabit ethernet, powered from PoE port, over UTP cable	1k MAC table CCTV mode: PoE port speeds limited to 10Mbps, cable range extends to over 200m	CCTV mode: PoE port speeds extends to over 200m	CCTV mode: PoE port speeds extends to over 200m	4x High PoE (PoE++) outputs for PTZ cameras or PS04PGE+1PD	Live port load+up/down traffic displaying, CCTV mode / VLAN forward mode, PoE power limit by port (8W - 36W), PoE watchdog set per port (if no traffic for set time, resets the power of the port)	Live port load+up/down traffic displaying, CCTV mode / VLAN forward mode, PoE power limit by port (8W - 36W), PoE watchdog set per port (if no traffic for set time, resets the power of the port)

* Ko je priključek GND priključen in kabel STP ni ozemljen na obeh koncih, če se uporablja STP.

model name	RA-48PoE	RA-48PoE-H1	PoE48	POE-60W
description	passive PoE+ (IEEE802.3 at)	passive PoE++ (IEEE802.3 bt)	passive PoE (IEEE802.3 af)	alternative DC power supply for PS04PGE+1PD
power supply	power injector	power injector	power splitter	PS04PGE+1PD
power output	96-260V AC	96-260V AC	36-57V DC	100-240V AC
network bandwidth	48V DC, 500mA, 24W	48V DC, 1000mA, 48W	12V DC, 1050mA, 12.6W	55V DC, 1100mA, 60W
	100 Mbps	100 Mbps	100 Mbps	

model name	CAB-LC2100B-IN
description	Cat5E 8xAWG-24 UTP cable
box content	305m reel, 9.6kg
conductor	Solid Copper 4x2x0.50, EN 50173 and YD/T1019-2013
thickness and resistance	Ø 0.5mm, 0.2mm², 95Ω/km
external diameter	5.1mm

model name	PS-EOC7001
description	1 channel ethernet over coax, passive converter transmit ethernet signal (10Mbps) over standard 75Ω/m coaxial cable, max 200m
compliance	comply with IEEE802.3 10BASE-T & 100BASE-T
surge protection	surge protection: 2kV

smart home

intelligent safe

catalogue



model name	OET-213H-BTS1
description	wrist temperature, mask wearing, face recognition terminal w. access control
image sensor	2MP, 1/2.8" CMOS
max. frame rate	30fps / 25fps
lens	2.8mm f/1.6, 104.1° corridor mode + mirror view default
minimal illumination (color)	0.003 lux
0 lux light source, light range	White LED 10m max
wide dynamic range	120dB true WDR H.264, H.265
video compression	+ Smart Encoding,
video streams	1. FullHD 1080x1920 Last measured temperature on video, date, time, ...
OSD display	7" touch screen, 600x1024px
audio source	built-in microphone
audio output	built-in speaker
VCA, video content analysis	face detection face recognition face+ID card matching mask wearing detection safety helmet wearing detection
face recognition database	max 10.000 face samples
in-camera storage option	built-in 4GB eMMC for passing snapshot records door contact out NO+NC alarm out NO+NC
alarm I/O, other I/O	2x alarm in, exit button in, door state contact in wiegand in, wiegand out (26/34)
ethernet interface	RJ45, 10/100Mbps
RS485	for temperature sensor and QR reader
card reader	13.56MHz mifare 1 serial number
contactless measurement dist.	1cm - 4cm
temp.measurement accuracy	± 0.3°C
power source, max consumption (W)	DC 12V±25%, 18W max 12V DC 3A suggested (not included)
working environment w. body temp. measuring	20°C – 35°C, indoor use only windless environment
weight	1.55kg
dimensions	terminal: 420 x 220 x 65mm temperature module: 114 x 69 x 87mm
optional mounting stands	EP-S31-W-NB floor stand EP-SZ34 desktop stand



model name	Q300
description	QR code reader for OET-213H-BTS1 to read EU DCC COVID pass QR code
image sensor	1/4" 640x480 CMOS
view angle	56° x 84°
reading distance	0.2cm - 6cm
scanning time	100ms
compatible symbology, code standards	2D: QR code ISO18004, PDF417 ISO15438 1D: EAN-8/13, ISBN-10/13, UPC-E, UPC-A, CODE39, CODE93, CODE128
connections	RS485
power source, consumption (W)	12V DC (5-24V DC) 0.75W
dimensions	75 x 65 x 29mm 30g



EP-S31-W-NB	EP-SZ34
floor-standing mounting bracket for OET-213H-BTS1	desktop-standing mounting bracket for OET-213H-BTS1
3x screw-locked backdoors	1x side mount for temperature sensor
2x side mounts for temperature sensor	usable as wall mount, if mount-plate is rotated 180°
base plate may be screwed to concrete	material: sheet metal
material: sheet metal	material: sheet metal
dimensions: 280 x 222 x 1158mm	dimensions: 128 x 118 x 188mm
weight: 6.85kg	weight: 0.8kg



model name	USS-TIC600
description	dual camera, body temperature people flow screening solution with blackbody reference
image sensor	2MP, 1/1.8" CMOS + 9.6x7.2mm bolometer (8-14µm)
max. frame rate	25fps
lens	3.8-16mm, zoom fixed as thermal+ 18mm f/1.0 thermal lens
minimal illumination (color)	0.001 lux
video compression	visible: H.264, H.265+ SmartEnc. thermal: H.264
connection devices	occupies 2 IP addresses (1x visual cam + 1x thermal cam)
video streams	visible light: 3 streams, max 1080p thermal camera: 1 stream, 384x288 face detection, over 20 faces followed simultaneously, temperature measurement automatic calibration to blackbody abnormal temperature alarm
VCA, video content analysis	
ethernet interface	RJ45, 10/100Mbps
power source, max consumption (W)	DC 12V±25%, 15W max 12V DC 3A suggested
working environment w. body temp. measuring	16°C – 32°C, indoor use only, windless environment
weight	5kg
dimensions	396.5 x 210 x 133.5mm
blackbody parameters	
accuracy	± 0.2°C
stability	± 0.1-0.2°C / 30min
radiation area	Ø 70mm
power source	230V AC, 50Hz
consumption	60W
weight	3.5kg
dimensions	135mm x 135mm x 150mm



model name	OTC-513
description	standing pole-mounted body temperature measuring instrument
video streams	no camera
OSD screen content	environment temperature temperature alarm counts normal temperatures count alariming treshold temperature last measured temperature
display	7" 600x1024px, touch screen for counter reset and device setup
alarm I/O, other I/O	1x alarm out 2x alarm in
alarm event notification	voice alarm, display alarm notification
ethernet interface	RJ45, 10/100Mbps for configuration access
RS485	internally, for temperature sensor
card reader	-
contactless measurement dist.	1cm - 4cm
temp.measurement accuracy	± 0.3°C
power source, max consumption (W)	DC 12V±25%, 18W max 12V DC 2A suggested (not included)
working environment w. body temp. measuring	20°C – 35°C, indoor use only windless environment
weight	3.5kg
dimensions	terminal: 137.5 x 69.0 x 340.0mm on pole: Ø 250 x 1541mm floor stand
optional mounting stands	included with OTC-513

Ultra
H.265

IQ

Super
StarLight

Built-in Wi-Fi

Edge Storage

Audio I/O
Alarm I/O

Smart IR Illumination
Transmitter

2-Way Audio

WDR

ColorWise

Warm White
LED

Audio
Reference

EyeSpy[®]

Eyespy, Trgovina in posredništvo
Tomislav Zver s.p.

Tel. št.: +386 41 711 341

e-naslov: info@eyespy.si

spletna stran: www.eyespy.si

spletna trgovina: www.eyespyshop.si